

# VisionSpy<sup>®</sup> 5040



The unique 1d hand-held reader for wafer identification in the semiconductor Industry



## Code-reading at high speeds

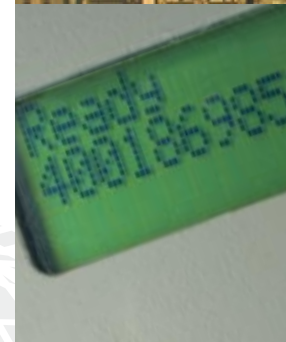
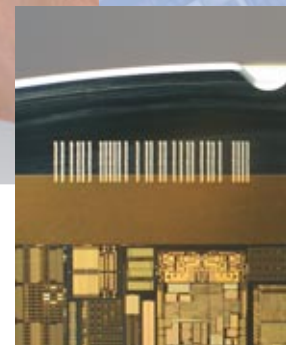
- Direct on wafer surfaces, reticles and photo masks
- Even through transparent SMIF pods
- Labels on wafer carriers and lead frames
- Reflecting, low-contrast codes
- Laser-like handling

## Unique Features

- Ergonomic industry-proven design
- Display (on VS5040D only)
- Upgradeable

## Adaptable to all environments

- I/O reaction compatible to major scanners
- Programmable parameter sets
- Programmable display (i.e. database feedback)



# VisionSpy® 5040



## Overview

The VisionSpy® 5040 compact hand-held reader was specifically designed to meet the requirements of the semiconductor industry. The laser-like reader combines ergonomic excellence with unique reading performance on highly mirroring surfaces.

## Applications

Thanks to its advanced GaviSync® algorithms the VisionSpy® 5040 reads 1d codes direct on all kinds of wafer surfaces as well as on production labels. This gives part traceability from the beginning to the end of the wafer manufacturing process. A built-in comparison logic allows direct matching of box label and wafer code.

## Options & Accessories

**Display** – For direct code feed-back, code comparison or programmable database feed-back the VisionSpy® 5040D enhances the hand-held concept by inclusion of a large and easy-to-read display on the top of the ergonomic casework.

**Software keyboard wedge** – The standard RS232 data link can be enhanced by a virtual keyboard wedge to enable Windows-based PCs to control any kind of application by simulating keyboard input instead of the need to constantly monitor the serial port. An extensive macro language implements remote control functions using easy to memorize key words.



VisionSpy® 5040	–	Specifications	Specifications subject to change without notice
Code types		BC412 (IBM & SEMI, T1-95 & Base35), 2/5 interleave, Codabar, Code 39, Code 128, UPC/EAN	
Sensor		High resolution CCD line imager	
Reading distance		30 – 200 mm	
Line of view		130 – 170 mm (depending on distance)	
Contrast resolution		15% black / white difference	
Lighting		Integrated LED (630 nm)	
Voltage input		12V DC (+- 10%), 550 mA max. (power supply included)	
Outputs		LED and acoustical signal when reading OK	
Data transmission		RS232 for code output & configuration (2.400 – 57.600 Baud) Software keyboard wedge (optional)	
Reading rate		125 readings per second	
Code dimensions		Minimum cell width 3 mil (at 90 mm reading distance)	
Trigger		Key and via serial RS232 command	
Physical characteristics		135 x 150 x 80 mm (5.3 x 6.0 x 3.1") Weight: 190 g Housing: Polycarbonat / ABS blend	
Environmental		Operating temperature: 5°- 45°C (40° F – 115° F) Humidity: 5%-90%, non-condensing	
Additional		Windows set-up tool Software keyboard wedge Programmable to customer specifications Display for code readout and comparison (on VS5040D only)	

