

# L200T-20

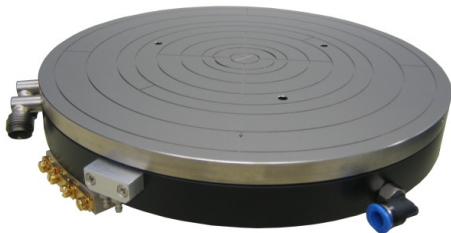
## low temp system

<b>system components</b>	<b>-20°C to +200°C</b>	
<b>Chuck L200T</b> <b>Controller L200T</b> <b>Cooling Unit L20</b>		
<b>system specifications</b>	<b>Prober Type</b>	<b>UF2000</b>
<b>function principle</b>	<b>Liquid / Heater</b>	
Temperature Range	-20°C to +200°C	
Temperature Stability/Accuracy	±0,1°C/±0,5°C	
Heating Rates	+25°C to +200°C	< 10 min
	-20°C to +25°C	< 10 min
Cooling Rates	+25°C to -20°C	< 15 min
	+200°C to +25°C	< 10 min
Temperature uniformity	-20°C to +200°C	<±0.5K/0.5%
Flatness / Parallelism	-20°C to +200°C	<±5µm
Cooling Capacity	400W	at -10°C
Isolation	>2 TOHM	at 25°C
Capacitance	800pF	Standard
	200pF	Triax
Max. Voltage	500V	at Chucktop
Interface	RS232 to Prober	Standard
Dimensions Chuck	Diameter	205mm
	Height	28mm
	Weight	4250g
Dimensions Controller	Prober Rack	11.0kg
Dimensions Cooling Unit	35cm x 60cm x 65cm	54kg
Air Supply	200l/min at 6bar	oilfree
	Dewpoint < - 40°C	
Power Supply Controller	100-127/208-240V	800VA
	50/60Hz, AC	
Power Supply Cooling Unit	230V 50Hz/208V 60Hz	2650VA
	AC	

## Advanced Temperature Test Systems GmbH

# low temp system

Chuck L200T



Controller L200T



Cooling Unit L20



**Advanced Temperature Test Systems GmbH**

Fraunhoferstraße 11 · 82152 Martinsried - München  
Telefon: + 49-89-89.94.82-0 · Fax: + 49-89-89.94.82-28 · [www.att-systems.com](http://www.att-systems.com)