

# A300T EX -10

## hot chuck system

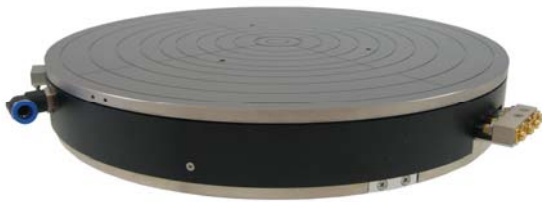
<b>system components</b>		
<b>Chuck A300T EX</b> <b>Controller A300T EX</b> <b>Cooling Unit A10</b>	<b>-10°C to +200°C</b>	
<b>system specifications</b>		
<b>function principle</b>	<b>Air / Heater</b>	
Temperature Range	-10°C to +200°C	
Temperature Stability/Accuracy	±0,1°C/±0,5°C	
Heating Rate	+25°C to +200°C	< 12min
	-10°C to +25°C	< 3min
Cooling Rate	+25 °C to -10°C	< 10min
	+200°C to +25°C	< 10min
Temperature Uniformity	-10°C to +200°C	<±0,5K/0,5%
Flatness / Parallelism	-10°C to +200°C	<±8µm
Cooling Capacity	100W	at -10°C
Isolation	>2 TOHM	at 25°C
Capacitance	1000pF	Standard
	100pF	Triax
Max. Voltage	500V	at Chucktop
Interface	RS232	Standard
Dimensions Chuck	Diameter	305mm
	Height	47mm
	Weight	8600g
Dimensions Controller	Prober Rack	11.6kg
Dimensions Cooling Unit	48cm x 48 cm x 40cm	40.0kg
Air Supply	280l/min at 6bar	oilfree
	Dewpoint < -50°C	
Power Supply Controller	100-127/208-240V	1500VA
	50/60Hz, AC	
Power Supply Cooling Unit	100/110/120/208/230V	1500VA
	50/60Hz, AC	

## Advanced Temperature Test Systems GmbH



# hot chuck system

Chuck A300T EX



Controller A300T EX



Cooling Unit A10

