

# A300T EX +25

## hot chuck system

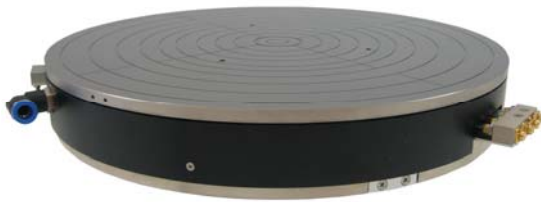
<b>system components</b>  <b>Chuck A300T EX</b> <b>Controller A300T EX</b>	<b>ambient to +200°C</b>	
<b>system specifications</b>		
<b>function principle</b>	<b>Air / Heater</b>	
Temperature Range	ambient to +200°C	
Temperature Stability/Accuracy	±0,1°C/±0,5°C	
Heating Rates	ambient to +200°C	< 12 min
Cooling Rates	+200°C to +30°C	< 14 min
Temperature Uniformity	+25°C to +200°C	<±0,5K/0,5%
Flatness / Parallelism	+25°C to +200°C	<±8µm
Isolation	>2 TOHM	at 25°C
Capacitance	1000pF	Standard
	100pF	Triax
Max. Voltage	500V	at Chucktop
Interface	RS232	Standard
Dimensions Chuck	Diameter	305mm
	Height	47mm
	Weight	8600g
Air Supply	250l/min at 6bar Dewpoint < 0°C	oilfree
Power Supply	100-127/208-240V 50/60Hz, AC	1500VA

### Advanced Temperature Test Systems GmbH



## hot chuck system

Chuck A300T EX



Controller A300T EX



**Advanced Temperature Test Systems GmbH**

Fraunhoferstraße 11 · 82152 Martinsried - München  
Telefon: + 49-89-89.94.82-0 · Fax: + 49-89- 89.94.82-28 · [www.att-systems.com](http://www.att-systems.com)

