

A300T EX +15

hot chuck system

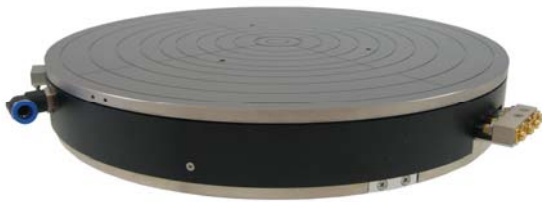
system components		
Chuck A300T EX Controller A300T EX Cooling Booster A300	+15°C to +200°C	
system specifications		
function principle	Air / Heater	
Temperature Range	+15°C to +200°C	
Temperature Stability/Accuracy	±0,1°C/±0,5°C	
Heating Rate	+25°C to +200°C	< 12min
	+15°C to +25°C	< 2min
Cooling Rate	+25°C to +15°C	< 11min
	+200°C to +25°C	< 25min
Temperature Uniformity	+15°C to +200°C	<±0,5K/0,5%
Flatness / Parallelism	+15°C to +200°C	<±8µm
Cooling Capacity	35W	at +25°C
Isolation	>2 TOHM	at 25°C
Capacitance	1000pF	Standard
	100pF	Triax
Max. Voltage	500V	at Chucktop
Interface	RS232	Standard
Dimensions Chuck	Diameter	305mm
	Height	47mm
	Weight	8600g
Air Supply	250l/min at 6bar Dewpoint < -10°C	oilfree
Power Supply	100-127/208-240V 50/60Hz, AC	1500VA

Advanced Temperature Test Systems GmbH



hot chuck system

Chuck A300T EX



Controller A300T EX



Cooling Booster A300



Advanced Temperature Test Systems GmbH

Fraunhoferstraße 11 · 82152 Martinsried - München
Telefon: + 49-89-89.94.82-0 · Fax: + 49-89-89.94.82-28 · www.att-systems.com

